

Sunview Led



Sunview Led, LLC

Address: 30 N Gould St, Suite 1404
Sheridan, WY 82801

Phone: 877 778-6843
E-mail: info@sunviewled.com
Web: www.sunviewled.com



ST-500-Street

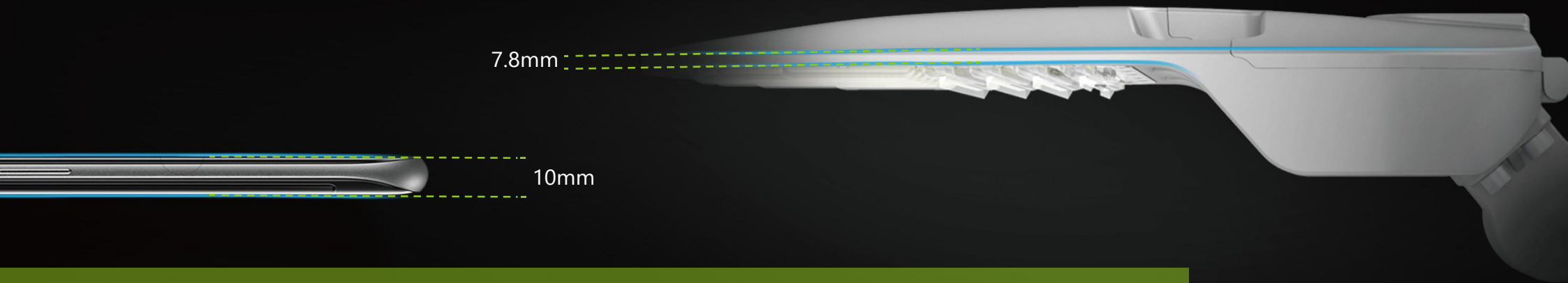
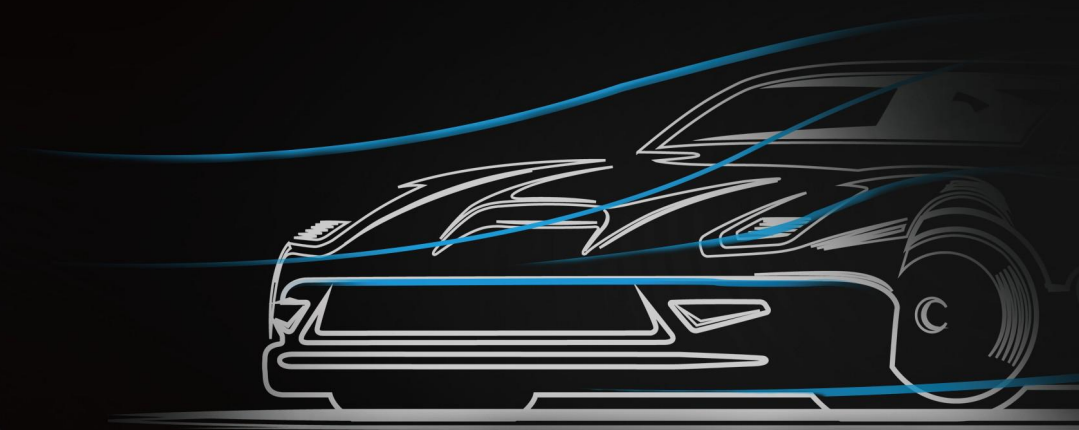
The roadway luminaires are designed to address the full range of outdoor lighting challenges in municipal lighting, from walkways, bike paths, car parks, residential streets to public roadways.

Adopting high quality LED chips and high light transmittance PC lens with the proper optic system, ST-500 could ensure to only illuminate wherever the light is needed. The elegant and streamlined design with smooth surface eliminate the risk of accumulation of dust and dirt in a harsh environment.

Its superior performance and configurability provide uniform, energy-efficient light for commercial, industrial and municipal parking lots as well as roadway applications.

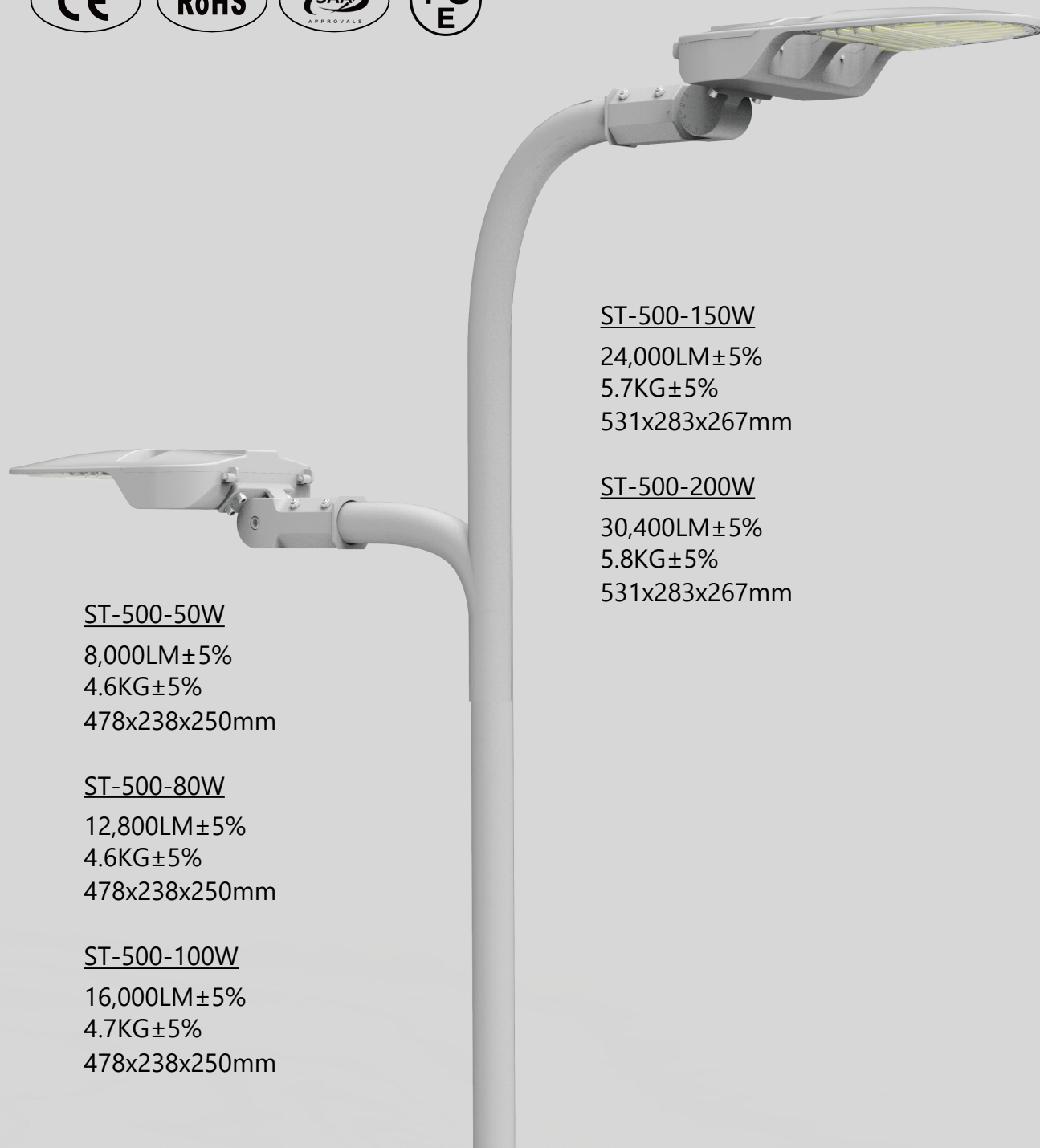


Aesthetics & Practicality



Integrated Surface

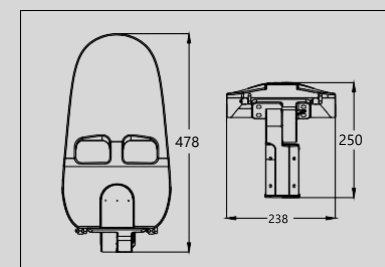
You won't see any exposed screw on the smooth lamp body, leave no place for dirt, leaf, snow, sand or even birds droppings. 7.8mm at its thinnest point, a neat modern artwork.



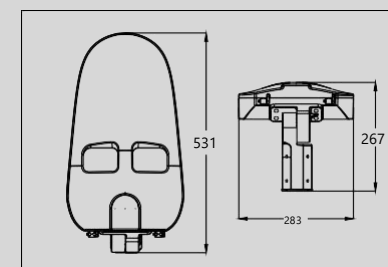
Parameter

Wattage	50/80/100/150/200W
Lamp Efficiency	160LM/W \pm 5%
CRI	Ra>70/80
CCT	2700~6500K
Rated Voltage	AC 100-240V 277V~, 50/60Hz
Power Factor	>0.95
IP Grade	IP66
IK Grade	IK10
Operating Temp	-40°C~60°C

Size (mm)



50/80/100W



150/200W

Installation



Pole



Arm



Wall

ST-500-150W

24,000LM \pm 5%

5.7KG \pm 5%

531x283x267mm

ST-500-200W

30,400LM \pm 5%

5.8KG \pm 5%

531x283x267mm

ST-500-50W

8,000LM \pm 5%

4.6KG \pm 5%

478x238x250mm

ST-500-80W

12,800LM \pm 5%

4.6KG \pm 5%

478x238x250mm

ST-500-100W

16,000LM \pm 5%

4.7KG \pm 5%

478x238x250mm

IP66

IK10

10KV

NEMA Socket Compatible



Dirt



Sand



Bird
Dropping



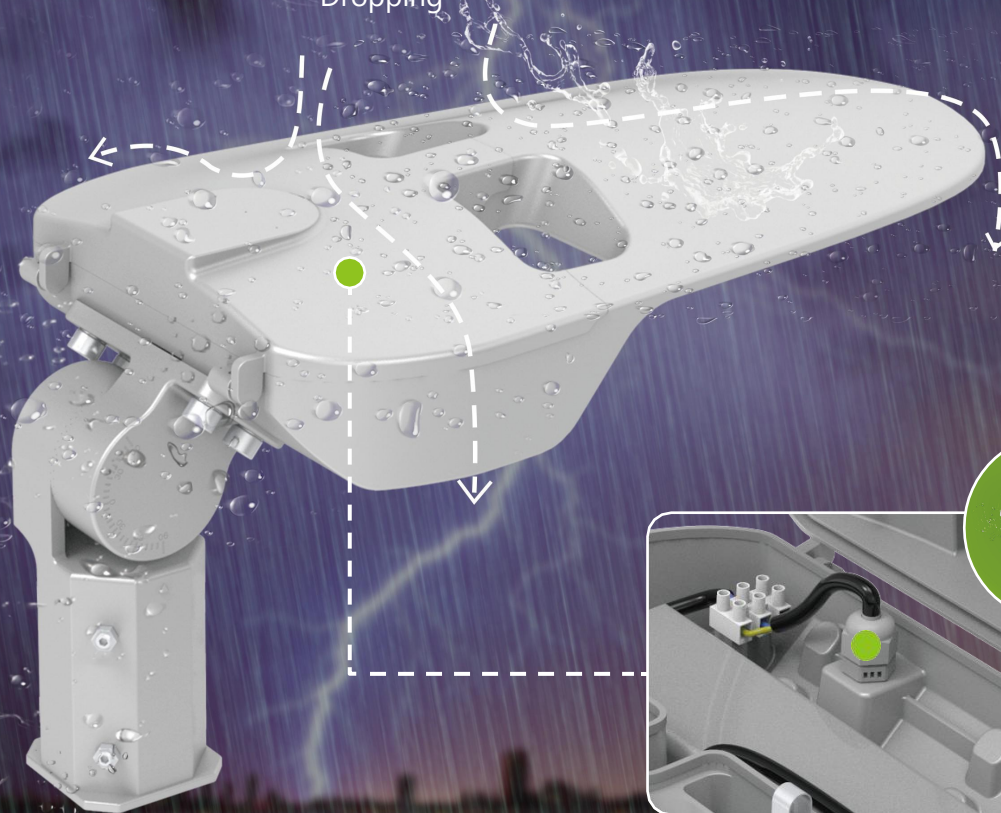
Snow/Ice



Leaf



Rain

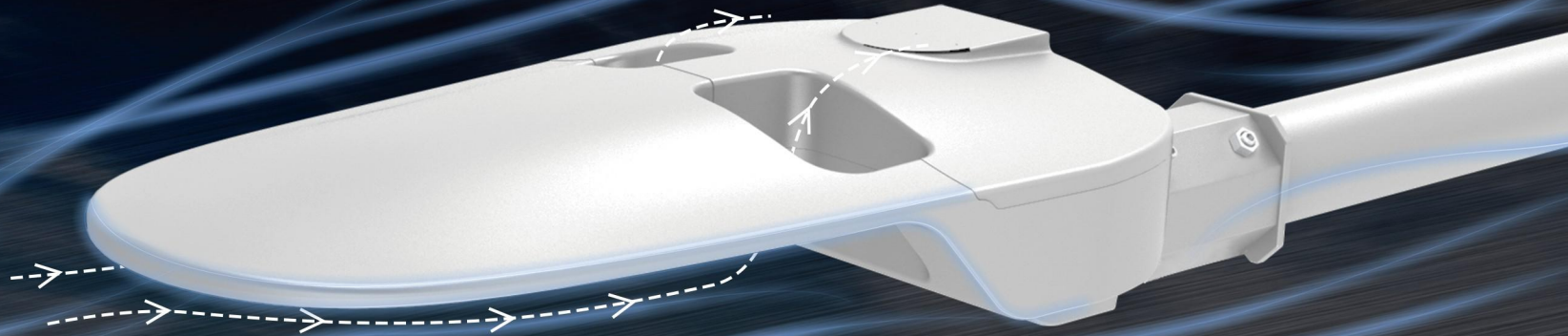


● **Breathing Valve**

Waterproof and breathable, block liquids and particles

Low Wind Resistance Design

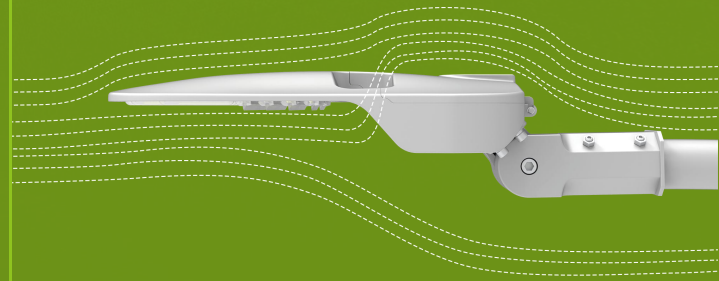
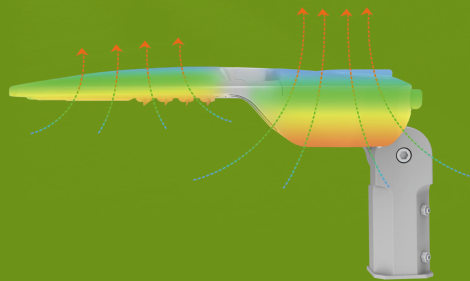
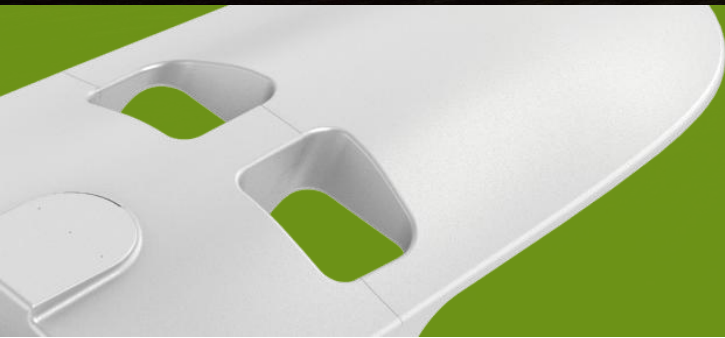
Reduce the load on the light pole, meanwhile reduce the vibration to maintain strength.



Split Cooling System

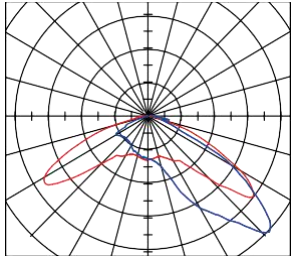
Driver & LEDs attached with separate cooling system, reduce the overall heat.

The central air tunnel allows more heat exchange.

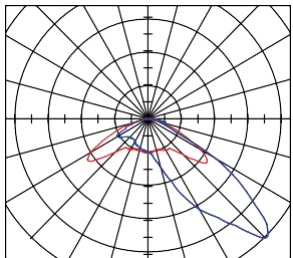
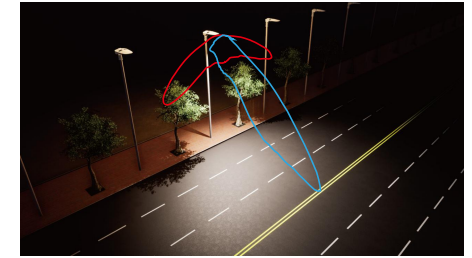
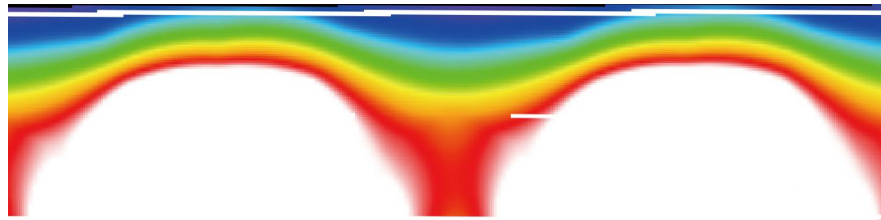




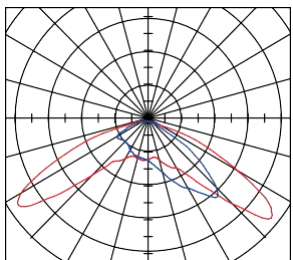
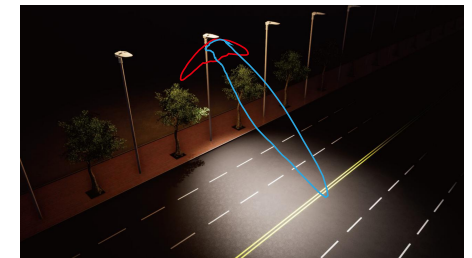
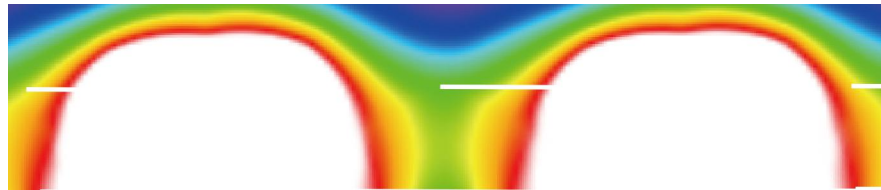
Type Light Distribution Available



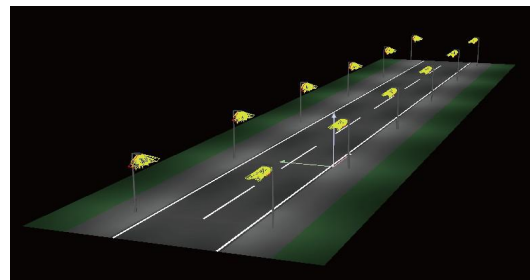
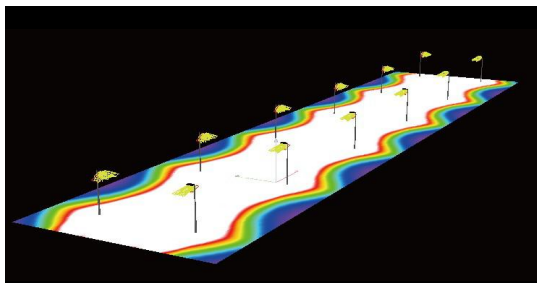
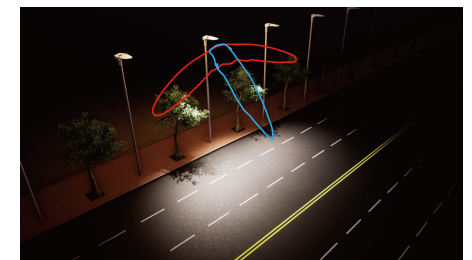
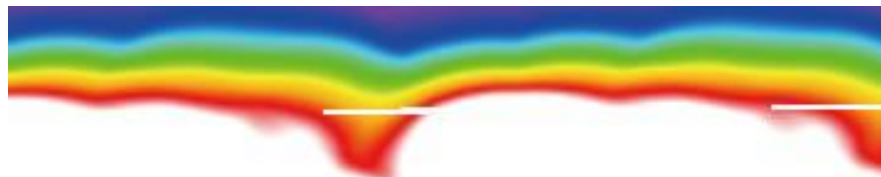
Type II



Type II
(Forward Throw)



Type II
(Ultra Wide)



Multiple light distribution give different options for different projects, flexibly layout ensuring illumination while reducing glare.

Application

Street



Community Street



Parking Lot



Public Area



Outdoor Billboard



Park



Test

Salt Spray Test



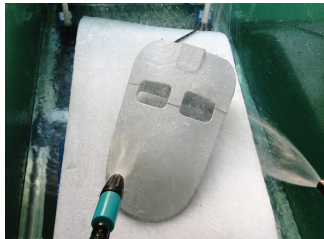
UV Aging Test



High-Low Temperature



Waterproof Test



Withstand Voltage Test



Vibration Test



Packing

Wattage	Size Of Box	Gross Weight
50w	550x310x235mm	6.1kg±5%
80w	550x310x235mm	6.1kg±5%
100w	550x310x235mm	6.2kg±5%
150w	600x360x240mm	7.5kg±5%



Pole Or Bracket



Pole Or Bracket

