

LED Lighting



- Airports
- Car Dealerships
- Industrial Areas
- Parking Lots
- Streets & Highways



Specification:

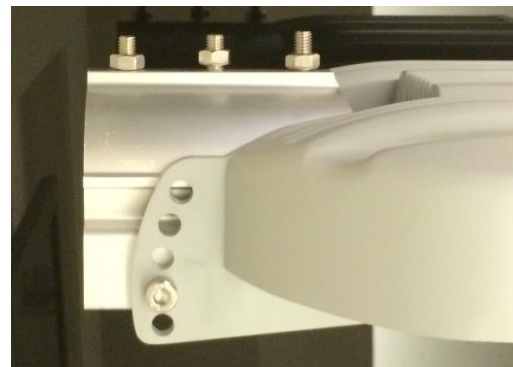
All aluminum housing for the heat dissipating, excellent for life span of lighting source.
Free of dust and water, suitable for outdoor.
Processed by painting treatment and anodic oxidation, solid and corrosion resisting.
Waterproof: IP65



LED SOLUTIONS FROM TRAFFIC ROUTES TO RESIDENTIAL AREAS

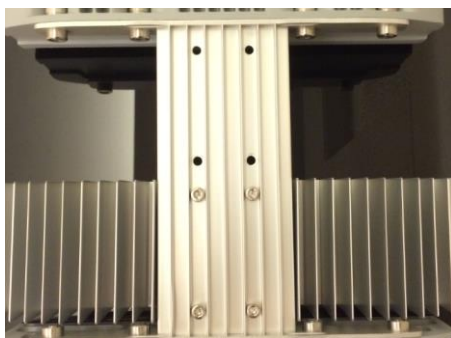
SUNVIEW OFFER an LED lighting solution without Compromise, offering the professional world of lighting a real energy efficient, high performance and affordable alternative to existing conventional lighting solutions.

Includes perfect glare control and prevention of light pollution according glare classifications up to G4, thanks to the complete flat design and Optiflux lens optics fulfills its lighting job in a very effective way and brings wide scale LED public lighting in practice.



Lamps and lanterns vertical instllation. adjustable Angle from 0-120 degree.

Lamps installed Horizontally, adjustable Angle for 4-8 degree.



Assembled with screw, easy to change for maintenance

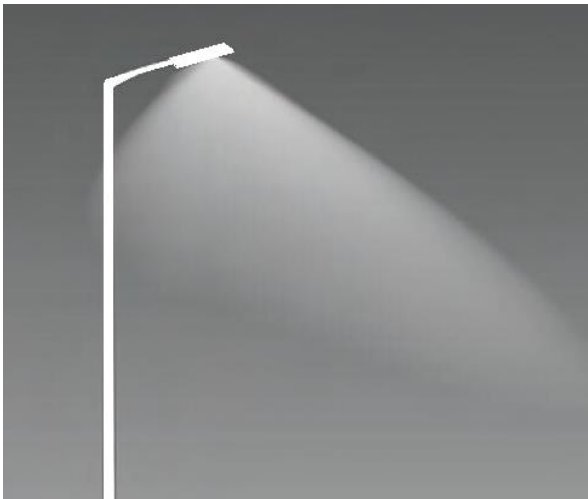
E style design for heat sink prevent the dust from sticking in the back.

Choice of lens optics to match international road and street geometries.
Combination of lenses and tilt adjustment options ensure high project flexibility.
Dedicated lumen packages deliver energy savings of over 50%, with a related reduction in CO2 emissions.

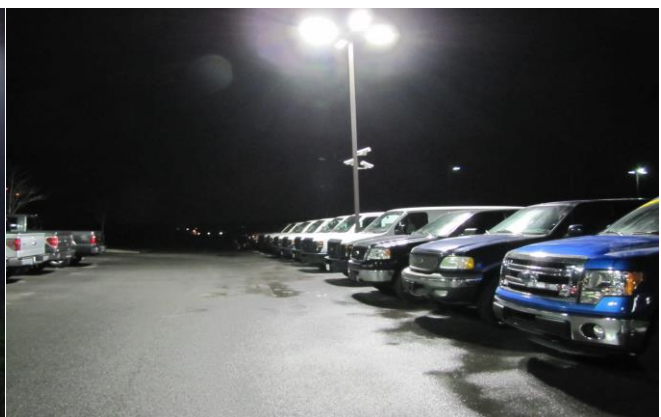


Without back light design.

Thanks to the lens design, Back Light control will prevent light spill from the back of the luminaire.

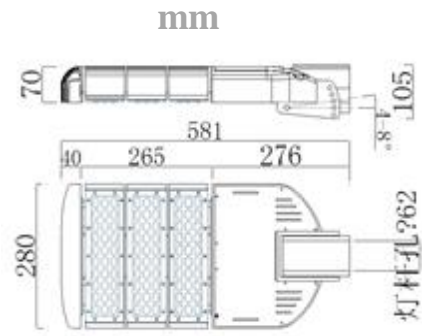


Plug design for the light source, power supply and external wires, easy for installation and maintenance.





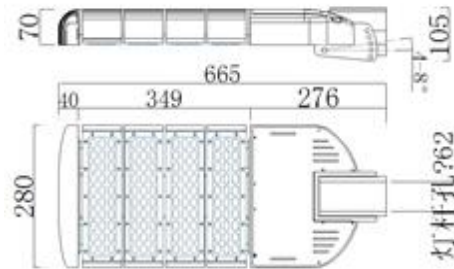
SL-HPL-120



150w



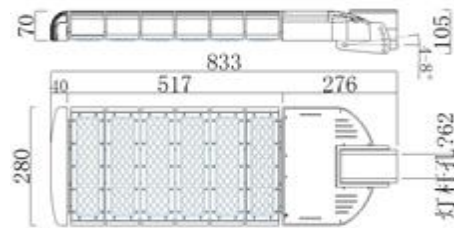
SL-HPL-200



200w



SL-HPL-300



300w

Items	Watts	Led brand	LM/ CCT	DIM (optional)
SV-HPL-120-1	50W	CERR	8000LM/ 4000K	1-10 V/ DALI
SV-HPL-120-2	100W	CREE	16000LM/ 4000K	1-10 V/ DALI
SV-HPL-120-3	150W	CREE	24000LM/ 4000K	1-10 V/ DALI
SV-HPL-200-1	200W	CREE	32000LM/ 4000K	1-10 V/ DALI
SV-HPL-200-2	250W	CREE	40000LM/ 4000K	1-10 V/ DALI
SV-HPL-300	300W	CREE	48000LM/ 4000K	1-10 V/ DALI

Specification

Input Voltage	100~277/200~305	Color Rendering Index	80
Light source	CREE	Driver	Programmed LED drivers
Dimming	1-10V Dimming, DALI, RSET,NTC, PLS,CLO	Correlated Color Temperature	2700k-5000k
Operating temperature range	-40C to +55C	Maintenance of lumen output - L80F10	Up to 100,000 hours at 25 °C
LENSES	78*132 Degree	Out put	36VDC
Out put current	0-350mA (per section)	Luminaire efficacy	160lm/w
Nema socket optional	5/7	IK	09
Protection	Class II	Certification	ETL ENEC, CB CE ROHS
Design service life	100,000h	IP	66

